

KST

TRANSFER GRILLES WITH FIXED VANES



S-M-A-Y

Characteristics:

A rectangular transfer ventilation grille made of steel, with fixed vanes.



Intended use:

The KST ventilation grilles can be used as covers for equipment installed in walls, e.g. transfer fire dampers.

Design

The frame and fixed vanes of the grilles are made of steel profiles painted in RAL9010 white. Other RAL colour painting and a stainless steel version are available upon request.

Net surface area

Approximate net surface area of the KST grilles:

$$A = 57\% \times (C \times D)$$



The technical data of the grilles, including pressure loss, noise level and stream ranges, is available at smay.eu, in the document titled "Flow Characteristics for Grilles and Diffusers"

Installation

The grilles can be fixed to a baffle with screws, through holes in the grille frame.

Dimensions

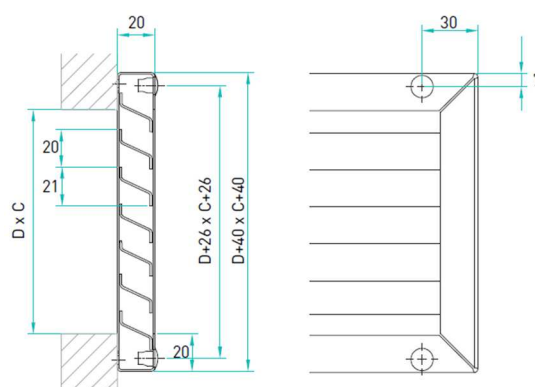


Figure 1. KST grille dimensions

Standard dimensions of the KST grilles:

- width **C = 160–860 mm**
- height **D = 260–1060 mm**

We can make custom-sized grilles or a set of multiple grilles upon request.

SO

SN

RAL



KST – Transfer grilles with fixed vanes

When ordering, please provide information according to the following pattern:

KST – <C> x <D> – <P> <RAL>

Where:

C	mounting hole width in mm
D	mounting hole height in mm
P	finish*

SL – painted steel

SN – stainless steel, quality 1.4301 (304 according to AISI, 0H18N9 according to PN)

RAL colour as per RAL (for SL finishing)*

* optional values – if not specified, default values will be used

Order example: **KST-260x860-SL9010**



Blocks for REVIT software,
a selection programme and
certificates are available at
www.smay.pl.