

SVS6

LONG RANGE NOZZLE



Description:

Long range aluminium nozzle with variable airflow angle set manually.

Intended use

Long range nozzles are designed for air supply in low- and medium-pressure ventilation systems of large public or industrial facilities. They are especially recommended where it is required to provide warm or cool air over long distances.

Design

The SVS6 consist of a mounting stub inside which there is a movable air supply element, which can be equipped with a damper. The whole set is made of satin aluminium in a natural colour. Other RAL colours are available upon request.

The movable element of the nozzle has a range of movement of 30 degrees from the central axis and can be adjusted in any direction with manual adjustment. A PMS masking ring can be ordered for the SVS6 nozzle.



Technical data of the diffusers, including pressure loss, noise level and airflow ranges, is available at smay.eu, in the document Flow Characteristics for Grilles and Diffusers.

Dimensions

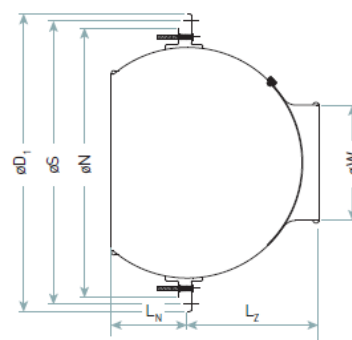


Figure 4. Dimensions of the SVS6 long range nozzle.

Table 1. SVS6 nozzle dimensions.

Size	ϕD_1 [mm]	ϕW [mm]	ϕN [mm]	ϕS [mm]	L_N [mm]	L_Z [mm]
40	139	40	109	120	16	63
50	169	50	132	148	22	73
80	249	80	206	226	57	92
110	289	110	246	266	60	116
150	389	150	346	366	103	173
200	489	200	446	466	141	226
230	489	230	446	466	141	216
250	489	250	446	466	141	208
300	489	300	446	466	141	184

Table 2. SVS6 nozzle accessory dimensions.

Size	ϕF [mm]	L_R [mm]	DN [mm]	ϕd [mm]	L_{RF} [mm]
40	115	150	160–450	78	120
50	135	150	200–500	98	160
80	205	200	315–630	158	220
110	250	300	315–800	198	220
150	352	300	500–800	248	250
200	452	350	500–1000	398	290
230	452	350	500–1000	398	290
250	452	350	500–1000	398	290
300	452	350	500–1000	398	290

AL AS RAL

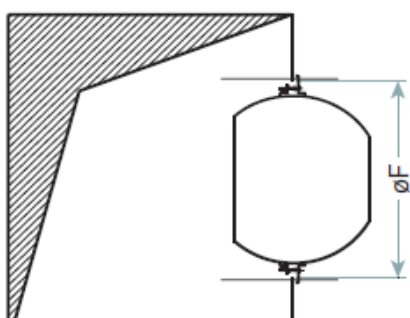


Figure 1. Installation directly on a rectangular duct.

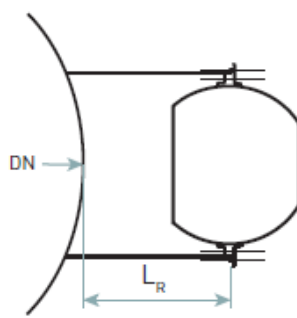


Figure 2. Installation on a round duct with an R-type cap.

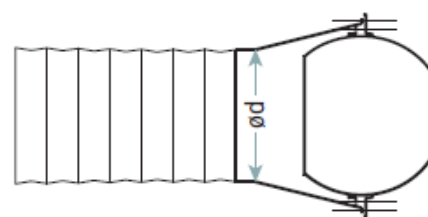


Figure 3. Installation at the end of a round cable with an RF cap.

SVS6 – Long range nozzle

When ordering, please provide information in accordance with the following pattern:

SVS6 - <S> - <R> - <P><RAL> / <ADD>

Where:

S	Nominal diameter: 40, 50, 80, 110, 150, 200, 230, 250, 300
R	Control
	None – No damper G – With a slot damper
P	Finish*
	AS – Satin aluminium AL – Painted aluminium
RAL	Colour according to the RAL palette (for AL execution, RAL9010 by default)*
ADD	Here, please specify additional accessories as below

* Optional values – if not specified, default values will be used

** For more information see the accessories sheet

Example of product marking: **SVS6-80-G-AL9010/RF**

Accessories**:

PMS	Mounting screw masking ring
R	Cap for mounting on the side of a round spiro duct
RF	Cap for mounting on the end of a round flex cable



- Revit blocks,
- selection program
- and approval documents are available at www.smay.pl.