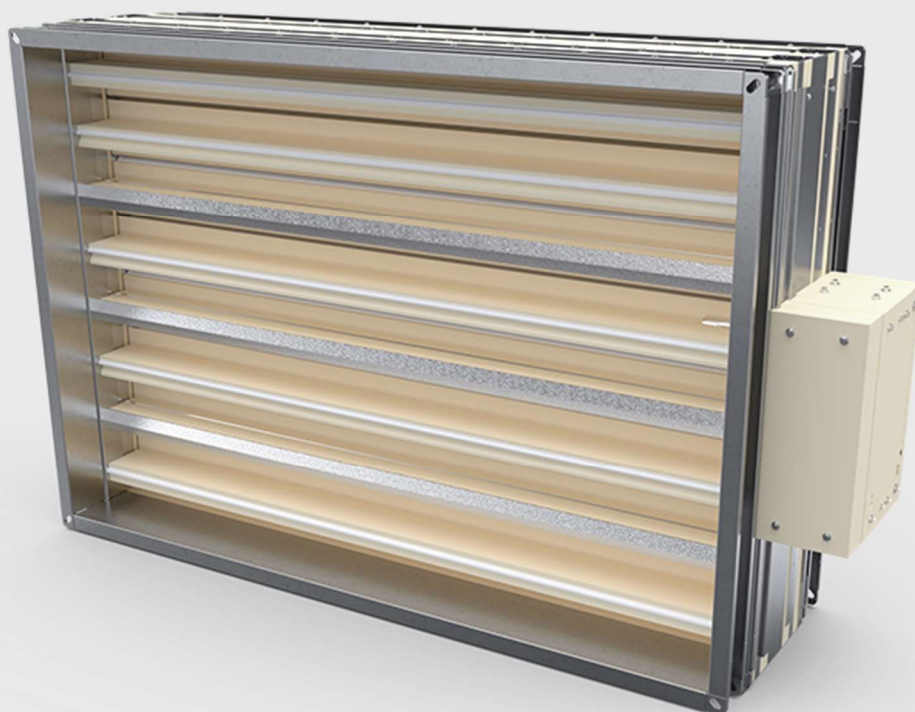


WKZ-O

Fire Damper -
rectangular

Technical Documentation



SMAYTM





2434

SMAY Sp. z o.o.

22

CSWU:2434-CPR-0284
DWU:031-CPR-2021

EN 15650:2010
Fire damper

type: WKZ-O

Nominal activation
conditions/sensitivity:
**Closing/opening during
the test at the right time**

Pass

Response time/Closure time:

Pass

Reliability:

10 000 cycles – Pass

Fire resistance:

**Fire integrity - E
Fire insulation - I
Smoke leakage - S
Mechanical stability
(under E)
Maintenance of the cross section (under E)**

EI 240 (ve i↔o) S

Durability:

**Response delay
Operating reliability**

Pass

Version 6.2

SMAY reserves the right to make changes to this document.

TABLE OF CONTENT

1.	INTRODUCTION.....	3
2.	LEGAL REGULATIONS.....	3
3.	INTENDED USE	3
4.	TECHNICAL DESCRIPTION	4
5.	BELIMO ELECTRIC ACTUATORS USED IN WKZ-O	6
6.	CONDITIONS OF TRANSPORT AND STORAGE	9
7.	INSTALLATION TECHNOLOGY.....	9
8.	COMMISSIONING	11
9.	PERIODIC MAINTENANCE AND SERVICING RULES	14
10.	CLASSIFICATION OF DAMPERS FOR REPAIR	19
11.	WARRANTY CONDITIONS.....	19

1. INTRODUCTION

The purpose of technical documentation is to familiarize the user with the intended use, design, operation principle, installation, periodic maintenance and operation of product.

2. LEGAL REGULATIONS

Fire dampers WKZ-O are certified by **CTO Gdańsk, Certificate of Constancy of Performance no. 2434-CPR-0284**.

The WKZ-O multi-blade fire damper is designed for application in general ventilation systems as cut-off partition separating the fire-engulfed zone from the remaining part of the building (normally open). The purpose of this damper is to prevent the spread of fire, heat and smoke.

The WKZ-O dampers are designed, manufactured and tested in accordance with the following standards: **PN-EN 15650** "Ventilation for buildings – Fire dampers" and **PN-EN 13501- 3** "Fire classification of construction products and building elements – Part 3: Classification using data from fire resistance tests on products and elements used in building service installations: fire resisting ducts and fire dampers."

The effectiveness of the dampers is confirmed by tests performed according to **PN-EN 1366-2** "Fire resistance tests for service installations – Part 2: Fire dampers."

The WKZ-O fire damper's **tightness is classified as class C** (housing tightness) on the basis of tests carried out according to **PN-EN 1751** "Ventilation for buildings. Air terminal devices. Aerodynamic testing of dampers and valves."

3. INTENDED USE

The WKZ-O fire dampers are classified according to fire resistance classes and can be installed in building partitions as listed below:

- a. **EI 240 (ve i↔o) S** – horizontal axis of rotation of blades. In rigid walls with low density (650 ± 200) kg/m² or more, with 180 mm thickness or more and with fire resistant class EI 240 or higher ((e.g. concrete, masonry of solid brick, cellular concrete blocks or airbricks and prefabricated boards),

where:

E – fire integrity,

I – fire insulation,

S – smoke leakage,

120/90– duration of fulfilment of E, I and S criteria, expressed in minutes,

ve – damper mounted directly in the wall,,

i↔o – operating effectiveness criteria are fulfilled from the inside to the outside (fire inside), and from the outside to the inside (fire outside).

The WKZ-O fire dampers may also be installed in either inner or outer buildings partitions, as also at a distance from them. In case of external wall installation, use of finishing element is required (intake or exhaust) which will protect from influence of atmospheric factors. Drive system (actuator or spring mechanism) should be installed inside facility. It is recommended to use dampers in special execution (impregnated fireproof boards, anti-corrosive steel elements).

4. TECHNICAL DESCRIPTION

The WKZ-O dampers are made up of a rectangular housing, movable blades and a drive system.

The dampers' housing is made of fire-rated boards and steel structural members. Both sides of the housing are equipped with steel connection spigots, which enable easy connection of a duct.

Movable blades, made of mineral silicate composite, are fastened to the housing by means of metal pins.

There are intumescent seals mounted on the inner side of the housing and on the blades. Their characteristic feature is the volume increase at high temperatures, tightly filling all leaks between the baffle and the body. A bubble seal ensures the leak tightness at ambient temperature.

The WKZ-O fire damper is provided with an innovative actuating mechanism, which ensures the counter rotation of the blades. The mechanism is made up of, among other things, gears made of fire-rated materials, blades and an electric actuator.

During normal operation of the system, the blades are in the open position.

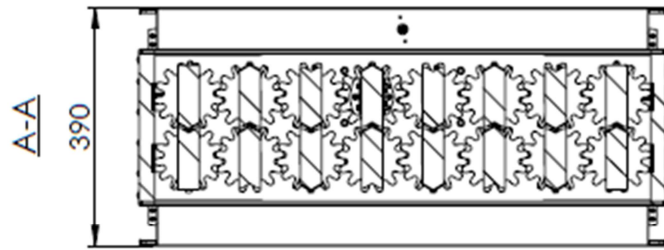
The permissible air velocity for the WKZ-O fire damper in a B x H connection duct is 12 m/s.

The WKZ-O damper is equipped with an electric spring return actuator of BF series by BELIMO and a BAT thermal fuse (72 ° C), which is the damper's drive system with AC 230 V or AC / DC 24V.

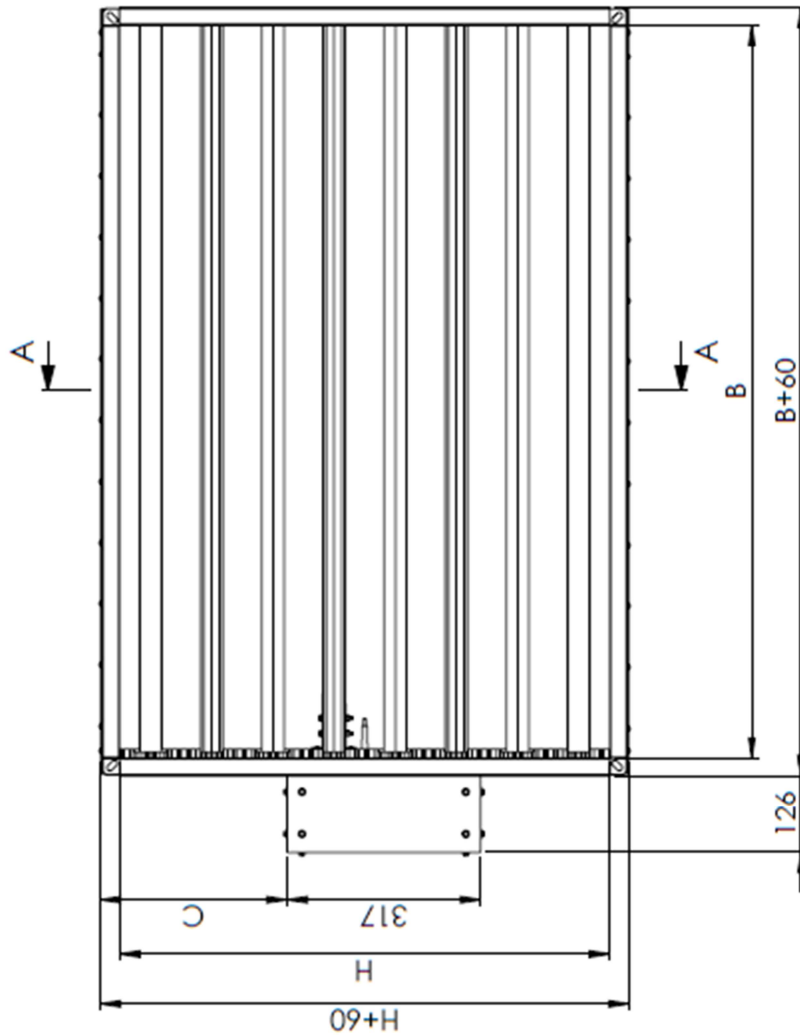
The range of dampers covers the following dimensions: a clear damper width from 200 to 1200 mm (10 mm intervals) and clear damper height from 200 to 800 mm (200 mm intervals).

Table 1. WKZ-O weight [kg]

Szerokość, B [mm]												
		200	300	400	500	600	700	800	900	1000	1100	1200
Wysokość, H [mm]	200	21	24	28	29	33	35	38	42	45	48	50
	400	24	28	31	35	38	43	47	50	54	55	59
	600	29	33	36	42	47	50	54	57	61	66	69
	800	33	38	43	47	52	57	61	66	69	74	80



N	C
4	0
8	100
12	200
16	300



Uwagi:
 B - szerokość światła kłapy (min. 200 max. 1200);
 H - wysokość światła kłapy (min. 200 max. 800);
 N - ilość piór kłapy;
 C - parametr, dobierać zgodnie z tabelą

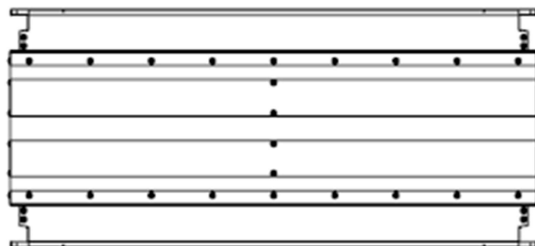


Figure 1. WKZ-O-E-K damper

5. BELIMO ELECTRIC ACTUATORS USED IN WKZ-O

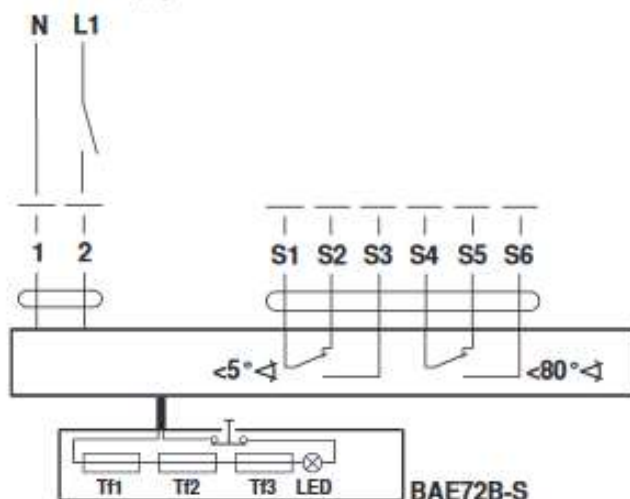
Spring-return 90° actuator BF series, combined with thermoelectric tripping device BAT:

- BF230-TN,
- BF24-T



Wiring diagram BF230-TN

AC 230 V, open-close



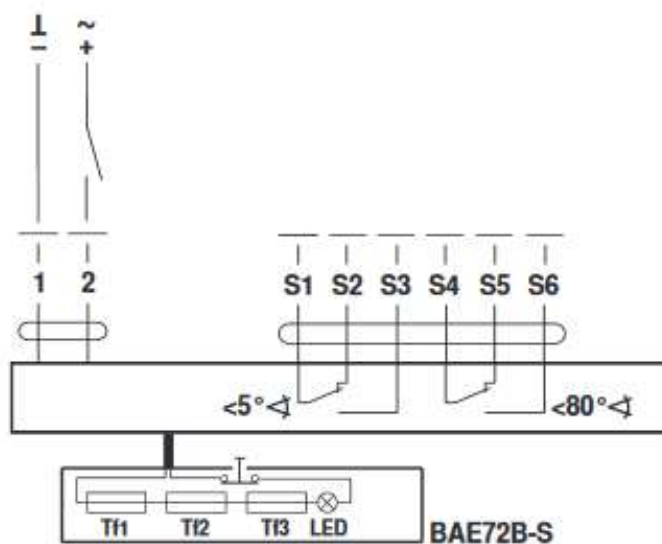
Cable colours:

1 = blue
2 = brown

S1 = white
S2 = white
S3 = white
S4 = white
S5 = white
S6 = white

Wiring diagram BF24-TN

AC/DC 24, open-close



Cable colours:

1 = black
2 = white

S1 = white
S2 = white
S3 = white
S4 = white
S5 = white
S6 = white

Technical data:		BF230-TN
Electrical data	Nominal voltage	AC 230 V
	Nominal voltage frequency	50/60 Hz
	Nominal voltage range	AC 198 V ... 264 V
	Power consumption in operation	8.5 W
	Power consumption at rest	3 W
	Power consumption for wire sizing	11 VA
	Power consumption for wire sizing note	I _{max} 0.5 A @ 5 ms
	Auxiliary switch	2 x SPDT
	Switching capacity auxiliary switch	Contact gold-plated silver: 1 mA ... 3 (0.5) A, DC 5 V ... AC 250 V (II Totally insulated)
	Switching points auxiliary switch	5° / 80°
	Connection supply	Cable 1 m, 2 x 0.75 mm ² (halogen-free)
	Connection auxiliary switch	Cable 1 m, 6 x 0.75 mm ² (halogen-free)
	Cable length thermoelectric tripping device	1 m
Functional data	Torque motor	Min. 18 Nm
	Torque spring-return	Min. 12 Nm
	Direction of rotation motor	Can be selected by mounting L / R
	Angle of rotation	Max. 95° (incl. 5° initial spring tension)
	Running time motor	<120 s / 90°
	Running time spring-return	16 s (t _{amb} = 20°C)
	Sound power level motor max.	45 dB (A)
	Sound power level spring-return max.	63 dB (A)
	Damper rotation	Form fit 12 mm (10 mm with enclosed adapter)
	Position indication	Mechanically, with pointer
	Service life	Min. 60,000 safety positions
Safety	Response temperature thermal fuse	Tf1: Duct outside temperature 72°C Tf2 and Tf3: Duct inside temperature 72°C
	Protection class IEC/EN	II Totally insulated
	Degree of protection IEC/EN	IP54 in all mounting positions
	EMC	CE according to 2014/30/EU
	Low-voltage directive	CE according to 2014/35/EU
	Certification IEC/EN	Certified according to IEC/EN 60730-1 and IEC/EN 60730-2-14
	Mode of operation	Type 1.AA.B
	Rated impulse voltage supply / control	4 kV
	Control pollution degree	3
	Ambient temperature normal duty	-30°C ... 50°C
	Ambient temperature safety duty	The safety position will be attained up to max. 75°C when triggered by a thermal fuse
	Non-operating temperature	-40°C ... 50°C
	Ambient humidity	95% r.h., non-condensing
	Maintenance	Maintenance-free
Weight	Weight approx.	3.1 kg

Technical data:		BF24-TN
Electrical data	Nominal voltage	AC/DC 24 V
	Nominal voltage frequency	50/60 Hz
	Nominal voltage range	AC 19.2 V ... 28.8 V / DC 21.6 V ... 28.8 V
	Power consumption in operation	7 W
	Power consumption at rest	2 W
	Power consumption for wire sizing	10 VA
	Power consumption for wire sizing note	I _{max} 8.3 A @ 5 ms
	Auxiliary switch	2 x SPDT
	Switching capacity auxiliary switch	Contact gold-plated silver: 1 mA ... 6 (3) A, DC 5 V ... AC 250 V (II Totally insulated)
	Switching points auxiliary switch	5° / 80°
	Connection supply	Cable 1 m, 2 x 0.75 mm ² (halogen-free)
	Connection auxiliary switch	Cable 1 m, 6 x 0.75 mm ² (halogen-free)
	Cable length thermoelectric tripping device	1 m
Functional data	Torque motor	Min. 18 Nm
	Torque spring-return	Min. 12 Nm
	Direction of rotation motor	Can be selected by mounting L / R
	Angle of Rotation	max. 95° (incl. 5° initial spring tension)
	Running time motor	<120 s / 90°
	Running time spring-return	16 s (t _{amb} = 20°C)
	Sound power level motor max.	45 dB (A)
	Sound power level spring-return max.	63 dB (A)
	Damper rotation	Form fit 12 mm (10 mm with enclosed adapter)
	Position indication	Mechanically, with pointer
	Service life	Min. 60,000 safety positions
Safety	Response temperature thermal fuse	Tf1: Duct outside temperature 72°C Tf2 and Tf3: Duct inside temperature 72°C
	Protection class IEC/EN	III Safety extra-low voltage
	Degree of protection IEC/EN	IP54 in all mounting positions
	EMC	CE according to 2014/30/EU
	Low-voltage directive	CE according to 2014/35/EU
	Certification IEC/EN	Certified according to IEC/EN 60730-1 and IEC/EN 60730-2-14
	Mode of operation	Type 1.AA.B
	Rated impulse voltage supply / control	0.8 kV
	Control pollution degree	3
	Ambient temperature normal duty	-30°C ... 50°C
	Ambient temperature safety duty	The safety position will be attained up to max. 75°C
	Non-operating temperature	-40°C ... 50°C
	Ambient humidity range	95% r.h., non-condensing
	Maintenance	Maintenance-free
	Weight approx.	2.8 kg

6. CONDITIONS OF TRANSPORT AND STORAGE

Fire dampers WKZ-O should be stored in cardboard boxes and/or on pallets. Dampers with actuator should have a pre-protected actuator cardboard box. Fire dampers should be stored indoors, providing protection against atmospheric agents, at a minimum temperature of +5°C. Do not allow mechanical damage of damper, that may be caused e.g. blows or dropping. After each transport, visual inspection of each fire damper must be carried out.

7. INSTALLATION TECHNOLOGY

Before installing the fire dampers, make sure that there are no damage, during transport or storage, that could block the baffle.

Check that the baffle can be opened and closed (full opening and closing position). To open fire dampers WKZ-O use the actuator key.

The opening and closing must proceed smoothly (not stepwise).

Do not pull by baffle to open or close fire damper, it may cause permanent damage, not covered by the warranty.

Before installation verify dimensions of a gap between bottom blade and inner part of housing under blade, and between top blade and inner part of housing above blade. The dimension of the gap can not be lower than 4 mm.

Before installing, secure the fire damper, by dust and dirt, using a foil or other screening material. It can prevent components of fire damper by damage.

Dampers to preserve of the declared resistance, insulation and smoke leakage EIS120, EIS90, should be installed on wall, which was classified as EIS120, EIS90.

It is allowed to install WKZ-O dampers in wall with other fire-resistance, should be remembered that fire-resistance in this situation is resistance of lowest classified (in this regard) element in this system.

Ducts made of flammable and non-flammable materials can be connected to the damper. Ducts should be installed that they can not load the damper during fire. Ducts lengthening during fire can be compensated by support and knee.

ATTENTION: Distance between fire dampers or fire damper and construction elements must be compatible with standard 1366-2:

- a. Minimal 200 mm between fire damper, which are installed in different ventilating wires, and between flaps and openings in the building partition;
- b. Minimal 75 mm between fire damper and construction element (wall/ceiling).

7.1. INSTALLATION TECHNOLOGY – RIGID WALL

- Make an opening in the wall with the dimensions 230 [mm] (acceptable $210 \div 250$ [mm]) greater than the dimension B and 100 [mm] (acceptable $80 \div 120$ [mm]) greater than the dimension H, this is $B+230$ i $H+100$.
- Put the closed fire damper into the installation opening and support or suspend, in this way that the actuator cover on the side of thermal fuse is flush with surface with the wall surface. The damper should be protected against possible undesirable stresses, which could lead to deflection of the housing, e.g. by using assembly struts.
- After setting the fire damper as described, fill the gap above and below actuator housing with the native material of wall, and then carefully fill the gap between the damper and the wall with cement, cement-lime mortar or concrete.
- After the mortar has dried (approx. 48 hours), remove the supports, assembly struts or suspensions, check the fire damper correct operation and leave it in open position.
- Secure the place of filling the gap from point "C" with a plate GKF 15x150 [mm] band, on both sides of the building partition, then coat the flanges with PROMASTOP-CC Liquid.

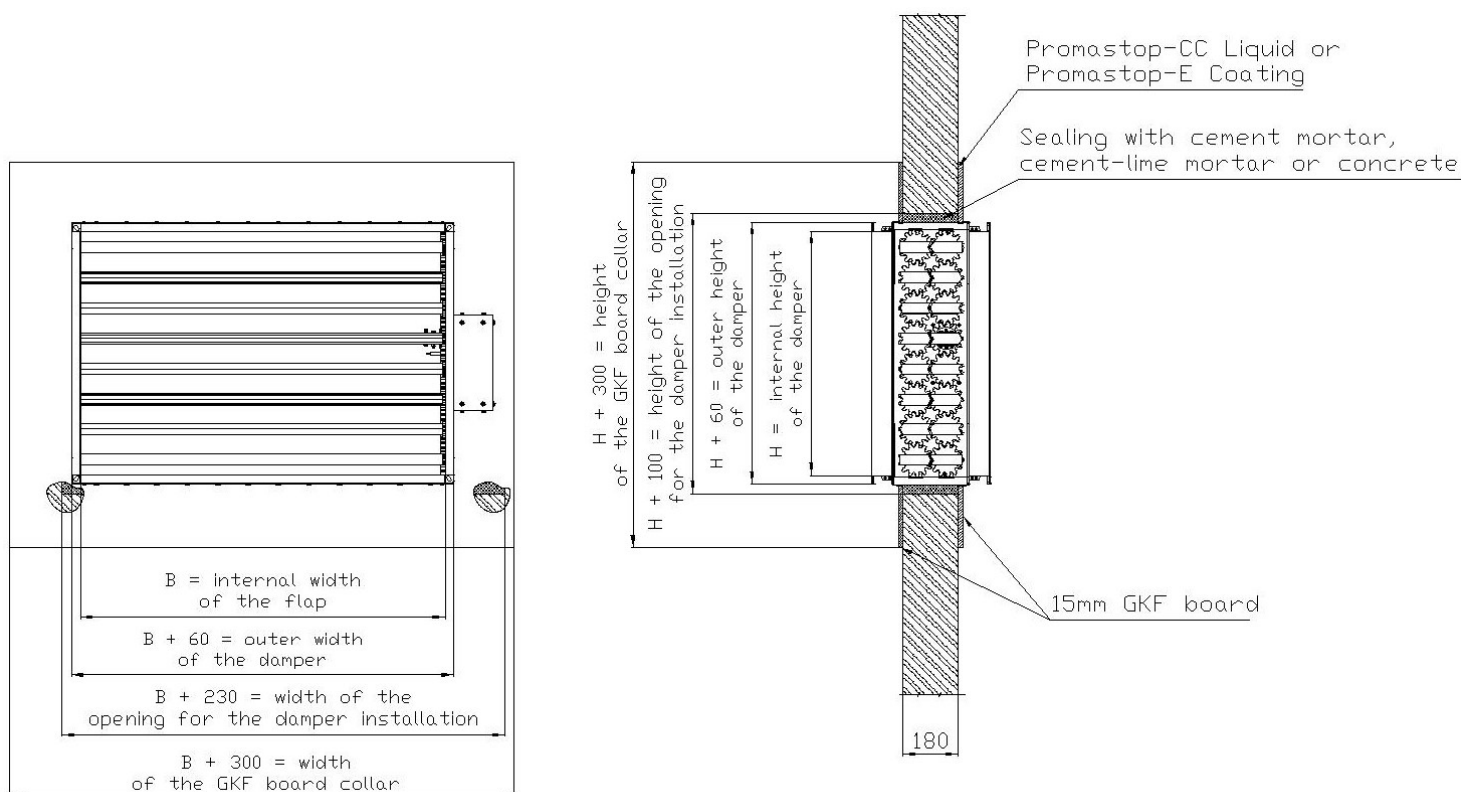


Figure 2. Installation method of fire dampers WKZ-O in rigid wall with horizontal rotation axis of baffle building partition.


8. COMMISSIONING

After assembling the device and installation into the control system, before putting the smoke control damper into operation, the following actions should be carried out and recorded:

- verify the correct assembly of the damper according to this Technical Documentation;
- check the correctness of the electrical installation in terms of power supply parameters and quality of execution;
- ensure that the damper has not been mechanically damaged during installation;
- verify the correct opening/closing of the damper, with the opening/closing time being maintained below 60 seconds;
- check the cleanliness of the device and ensure that there are no foreign elements present that could damage the device;
- ensure proper accessibility to the drive mechanism and thermal trigger mechanism - required for service and maintenance purposes;
- check the availability and legibility of labeling stickers.

After the installation of the WKZ-O damper, before putting it into operation, a document must be prepared: 'Installation and Commissioning Protocol - Smoke control dampers'. This protocol should be signed by a person holding a current, personalized certificate or certificate issued by Smay Sp. z o. o. authorizing the installation of WKZ-O dampers. A copy of this document should be sent electronically to the manufacturer (www.smay.pl → SERVICE AND WARRANTY tab → ADD START-UP PROTOCOL) within 30 days from the commissioning date (date indicated in the Installation and Commissioning Protocol for the WKZ-O damper). Failure to comply with this formality will result in the loss of warranty for the device.

Installation and Commissioning Protocol - Smoke control dampers (universal for all dampers in the SMAY offer) is outlined below:

INSTALLATION AND COMMISSIONING PROTOCOL - SMOKE CONTROL DAMPERS																	
Data of the company performing the installation and commissioning (seal)																	
OBJECT / INSTALLATION LOCATION				INSTALLATION AND COMMISSIONING EXECUTION													
Object Name: Object Address:				Damper Type:		<div style="display: flex; flex-wrap: wrap;"> <div style="width: 33%;"><input type="checkbox"/> KTM-O</div> <div style="width: 33%;"><input type="checkbox"/> KTS-O</div> <div style="width: 33%;"><input type="checkbox"/> KWP-O</div> <div style="width: 33%;"><input type="checkbox"/> KWP-P</div> <div style="width: 33%;"><input type="checkbox"/> KWP-Ex</div> <div style="width: 33%;"><input type="checkbox"/> KWP-L</div> <div style="width: 33%;"><input type="checkbox"/> WKP-O</div> <div style="width: 33%;"><input type="checkbox"/> WKP-P</div> <div style="width: 33%;"><input type="checkbox"/> WKZ-O</div> <div style="width: 33%;"><input type="checkbox"/> WKS-P</div> </div>											
Commissioning Date:													
SCOPE OF CONTROL AFTER INSTALLATION AND COMMISSIONING																	
<p>A - Correctness of damper assembly according to the Technical Documentation Record (DTR);</p> <p>B - Correctness of the electrical installation in terms of power supply parameters and quality of execution;</p> <p>C - Damper has not been mechanically damaged during installation;</p> <p>D - Correct opening/closing of the damper, with the opening/closing time being maintained below 60 seconds;</p> <p>E - Cleanliness of the device, and absence of foreign elements that could lead to device damage;</p> <p>F - Maintenance of proper accessibility to the drive mechanism and thermal trigger - required for service and maintenance purposes;</p> <p>G - Availability and legibility of labeling stickers.</p> <p>N – negative result</p> <p>P – positive result</p>																	
DAMPERS				CHECKLIST OF ACTIVITIES													
No.	Identification	Type	Serial Number	A		B		C		D		E		F		G	
				P	N	P	N	P	N	P	N	P	N	P	N	P	N
1																	
2																	
3																	
4																	
5																	
6																	
7																	
8																	
9																	
10																	
11																	

12																	
13																	
14																	
15																	
16																	
17																	
18																	
19																	
20																	

Remarks:

.....

.....

.....

.....

.....

.....

.....

Contractor's Declaration

We confirm the execution of the protocol in accordance with the guidelines and Technical Documentation of the manufacturer and the manufacturer's instructions from the assembly manual.

Control Result: **Positive / Negative**

Recommendations: None / as per the
remarks above

Review Contractor		Authorization Number <small>(issued by Smay company)</small>	Signature	Client Confirmation:
1.				
2.				

9. PERIODIC MAINTENANCE AND SERVICING RULES

Before starting any operational and maintenance work, you must familiarize yourself with this documentation. This obligation particularly falls on individuals responsible for operating the device or equipment within the scope of operation, maintenance, and service. In the absence of technical personnel with qualifications specified by the manufacturer, the inspection/maintenance of current devices should be carried out by the SMAY Manufacturer's Service or an Authorized SMAY Service/SMAY Service Partner.

Damage to the WKZ-O damper resulting from failure to comply with the guidelines contained in the documentation will not be covered by warranty repairs.

After installing WKZ-O smoke control dampers and with the system activated, it is necessary to conduct regular inspections and record them as presented in the Annual Inspection Protocol - Smoke control dampers (included below) **no less frequently than every 12 months or in periods resulting from local legislation. If necessary, inspections should be conducted more frequently.**

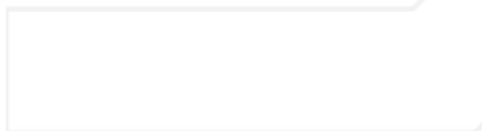
The fact of inspecting the technical condition and servicing of the device should be documented by an inspection protocol, the template of which has been included in this documentation.


Failure to implement the above guidelines regarding periodic inspection results in the device not being allowed for further operation. Simultaneously such a device loses the manufacturer's warranty protection in accordance with the OWG

All activities related to the replacement or modification of device components can only be carried out by the SMAY Manufacturer's Service or an Authorized SMAY Service/SMAY Service Partner. Elements that have been factory sealed should have intact original seals applied by the SMAY Manufacturer's Service or an Authorized SMAY Service/SMAY Service Partner.

The WKZ-O damper does not require any protective measures other than regular maintenance/technical inspections and proper care, including keeping the damper elements clean. The damper can be cleaned using a dry cloth or brush. Dirt and other contaminants can be removed using commonly available cleaning agents. Do not use aggressive, corrosive, or sharp tools.

Below is a list of recommended periodic inspection activities along with possible faults (universal for all dampers in the SMAY offer).



ANNUAL INSPECTION PROTOCOL - SMOKE CONTROL DAMPERS				
Company performing the inspection (seal)				
OBJECT / INSTALLATION LOCATION		INSPECTION EXECUTION		
Nazwa obiektu: Adres obiektu: 		Date of execution: 	<div style="display: flex; justify-content: space-between;"> <div> <input type="checkbox"/> KTM-O <input type="checkbox"/> KTS-O <input type="checkbox"/> KWP-O <input type="checkbox"/> KWP-P <input type="checkbox"/> KWP-Ex <input type="checkbox"/> KWP-L <input type="checkbox"/> WKP-O <input type="checkbox"/> WKP-P <input type="checkbox"/> WKZ-O <input type="checkbox"/> WKS-P </div> <div> </div> </div>	
		Total number of devices: 		
SCOPE OF THE REVIEW PERFORMED				
Inspection activities <small>(in accordance with the attachment)</small>		Status of inspection activities		
		Performed <small>(Yes/No)</small>	Evaluation <small>(Positive/Negative)</small>	Issue number <small>(Describe below on the page)</small>
1	Visual inspection of dampers			
2	Control of damper actuator			
3	Trigger inspection			
4	Inspection of smoke control damper operation			
5	Leaving dampers in operational position		X	
A detailed list of devices subjected to inspection is presented in Attachment No. 1: 'List of Devices,' which is an integral part of this inspection protocol.				
REMARKS / RECOMMENDATIONS <small>(enumerate from consecutive numbers)</small>				

Contractor's Statement

We confirm the execution of the inspection in accordance with the guidelines and manufacturer's technical documentation. Based on the aforementioned regulation, we inform about the obligation to perform annual inspections of smoke control dampers as part of the fire protection system.

Result of the **Positive / Negative**
inspection:

Recommendations: None / as per remarks
above

The next inspection should be performed before 20..... r.
(Month)

Inspection contractor		License number (issued by Smay company)	Signature	Confirmation by the Client:
1.				
2.				

Checklist of activities:		Legend for remarks: Remarks with the symbol (K) denote critical remarks that result in a negative control outcome for the damper.
Visual inspection of the damper	A. Reading data from the nameplate sticker of the damper	1. (K) lack of access to the damper for inspection; 2. absence of a visible nameplate sticker; 3. illegible data on the sticker;;
	B. Assessment of the condition of the damper enclosure	4. (K) absence or severely damaged enclosure of the damper in the wall; absence or severely damaged fire insulation of the damper installed on the duct; 5. minor damage to the damper enclosure or suspicion of enclosure not compliant with manufacturer's guidelines;
	C. Assessment of the condition of the damper casing	6. damage to casing, perforation, bending, corrosion;
	D. Assessment of the condition of the partition and drive transmission	7. (K) lack of access to inspect the inside of the damper; 8. (K) damage to the partition or gears*, cracking, delamination; 9. (K) damage to the partition bearings or drive transmission mechanisms;
	E. Assessment of the condition of the swelling seal and ventilation	10. (K) damage to the swelling seal, noticeable loss, lack of continuity around the partition; 11. damage to the ventilation seal, noticeable loss, detachment from the mounting location;
Control of damper actuator	F. Assessment of damper cleanliness, cleaning	12. (K) severe soiling of damper components impossible to remove;
	G. Assessment of manual mechanism*	13. (K) damage to manual mechanism (e.g., rotating or loose spring); 14. lack of indication of damper position status;
	H. Assessment of the actuator* (compliance of the symbol with the nameplate, warranty seal)	15. (K) lack of actuator response to power supply; 16. (K) actuator spring damage; 17. (K) actuator symbol not matching the nameplate; 18. warranty seal broken; 19. noticeable mechanical damage to actuator; 20. lack of service access to actuator; 21. improper manual actuation of the actuator;
	I. Assessment of damper electrical connection*	22. (K) damage to power supply cable; 23. lack of access to junction box;
Trigger control	J. Inspection of mechanical trigger*	24. (K) lack of a fusible link element; 25. (K) non-factory method of holding the damper in the open position; 26. (K) trigger embedded in the wall;
	K. Inspection of electrical trigger*	27. (K) lack of response to pressing the test button on the trigger; 28. (K) unscrewed or improperly mounted trigger; 29. trigger embedded in the wall;
Damper operation control	L. Opening and closing of the damper	30. (K) inability to fully transition the partition from closed to open position and vice versa; 31. (K) rubbing of the partition against the enclosure during position change;
	M. Assessment of maintaining the open position	32. lack of damper retention in the open position;
	N. Assessment of proper closure of the damper	33. (K) lack of full closure of the partition;
	O. Assessment of proper response to control signal from SAP or voltage loss	34. lack of or improper response to control signal; 35. (K) no response to power loss (applies to shut-off dampers); 36. (K) operation not in accordance with control matrix (applies to fire ventilation dampers); 37. lack of feedback on damper status to SAP;;
99. Other		

* If they occur in the controlled type of damper

No.	Dampers			Power supply voltage [V]	Visual inspection of the damper (A-F)		Damper actuator check (G-I)		Trigger control check (J-K)		Damper operation check (L-O)		Location	Remarks
	Labeling	Type	Serial number		Positive	Negative	Positive	Negative	Positive	Negative	Positive	Negative		
					<input type="checkbox"/>	<input type="checkbox"/>	<input type="checkbox"/>	<input type="checkbox"/>	<input type="checkbox"/>	<input type="checkbox"/>	<input type="checkbox"/>	<input type="checkbox"/>		
					<input type="checkbox"/>	<input type="checkbox"/>	<input type="checkbox"/>	<input type="checkbox"/>	<input type="checkbox"/>	<input type="checkbox"/>	<input type="checkbox"/>	<input type="checkbox"/>		
					<input type="checkbox"/>	<input type="checkbox"/>	<input type="checkbox"/>	<input type="checkbox"/>	<input type="checkbox"/>	<input type="checkbox"/>	<input type="checkbox"/>	<input type="checkbox"/>		
					<input type="checkbox"/>	<input type="checkbox"/>	<input type="checkbox"/>	<input type="checkbox"/>	<input type="checkbox"/>	<input type="checkbox"/>	<input type="checkbox"/>	<input type="checkbox"/>		
					<input type="checkbox"/>	<input type="checkbox"/>	<input type="checkbox"/>	<input type="checkbox"/>	<input type="checkbox"/>	<input type="checkbox"/>	<input type="checkbox"/>	<input type="checkbox"/>		
					<input type="checkbox"/>	<input type="checkbox"/>	<input type="checkbox"/>	<input type="checkbox"/>	<input type="checkbox"/>	<input type="checkbox"/>	<input type="checkbox"/>	<input type="checkbox"/>		
					<input type="checkbox"/>	<input type="checkbox"/>	<input type="checkbox"/>	<input type="checkbox"/>	<input type="checkbox"/>	<input type="checkbox"/>	<input type="checkbox"/>	<input type="checkbox"/>		
					<input type="checkbox"/>	<input type="checkbox"/>	<input type="checkbox"/>	<input type="checkbox"/>	<input type="checkbox"/>	<input type="checkbox"/>	<input type="checkbox"/>	<input type="checkbox"/>		
					<input type="checkbox"/>	<input type="checkbox"/>	<input type="checkbox"/>	<input type="checkbox"/>	<input type="checkbox"/>	<input type="checkbox"/>	<input type="checkbox"/>	<input type="checkbox"/>		
					<input type="checkbox"/>	<input type="checkbox"/>	<input type="checkbox"/>	<input type="checkbox"/>	<input type="checkbox"/>	<input type="checkbox"/>	<input type="checkbox"/>	<input type="checkbox"/>		
					<input type="checkbox"/>	<input type="checkbox"/>	<input type="checkbox"/>	<input type="checkbox"/>	<input type="checkbox"/>	<input type="checkbox"/>	<input type="checkbox"/>	<input type="checkbox"/>		
					<input type="checkbox"/>	<input type="checkbox"/>	<input type="checkbox"/>	<input type="checkbox"/>	<input type="checkbox"/>	<input type="checkbox"/>	<input type="checkbox"/>	<input type="checkbox"/>		
					<input type="checkbox"/>	<input type="checkbox"/>	<input type="checkbox"/>	<input type="checkbox"/>	<input type="checkbox"/>	<input type="checkbox"/>	<input type="checkbox"/>	<input type="checkbox"/>		
					<input type="checkbox"/>	<input type="checkbox"/>	<input type="checkbox"/>	<input type="checkbox"/>	<input type="checkbox"/>	<input type="checkbox"/>	<input type="checkbox"/>	<input type="checkbox"/>		
					<input type="checkbox"/>	<input type="checkbox"/>	<input type="checkbox"/>	<input type="checkbox"/>	<input type="checkbox"/>	<input type="checkbox"/>	<input type="checkbox"/>	<input type="checkbox"/>		
					<input type="checkbox"/>	<input type="checkbox"/>	<input type="checkbox"/>	<input type="checkbox"/>	<input type="checkbox"/>	<input type="checkbox"/>	<input type="checkbox"/>	<input type="checkbox"/>		
					<input type="checkbox"/>	<input type="checkbox"/>	<input type="checkbox"/>	<input type="checkbox"/>	<input type="checkbox"/>	<input type="checkbox"/>	<input type="checkbox"/>	<input type="checkbox"/>		
					<input type="checkbox"/>	<input type="checkbox"/>	<input type="checkbox"/>	<input type="checkbox"/>	<input type="checkbox"/>	<input type="checkbox"/>	<input type="checkbox"/>	<input type="checkbox"/>		
					<input type="checkbox"/>	<input type="checkbox"/>	<input type="checkbox"/>	<input type="checkbox"/>	<input type="checkbox"/>	<input type="checkbox"/>	<input type="checkbox"/>	<input type="checkbox"/>		
					<input type="checkbox"/>	<input type="checkbox"/>	<input type="checkbox"/>	<input type="checkbox"/>	<input type="checkbox"/>	<input type="checkbox"/>	<input type="checkbox"/>	<input type="checkbox"/>		
					<input type="checkbox"/>	<input type="checkbox"/>	<input type="checkbox"/>	<input type="checkbox"/>	<input type="checkbox"/>	<input type="checkbox"/>	<input type="checkbox"/>	<input type="checkbox"/>		
					<input type="checkbox"/>	<input type="checkbox"/>	<input type="checkbox"/>	<input type="checkbox"/>	<input type="checkbox"/>	<input type="checkbox"/>	<input type="checkbox"/>	<input type="checkbox"/>		
					<input type="checkbox"/>	<input type="checkbox"/>	<input type="checkbox"/>	<input type="checkbox"/>	<input type="checkbox"/>	<input type="checkbox"/>	<input type="checkbox"/>	<input type="checkbox"/>		
					<input type="checkbox"/>	<input type="checkbox"/>	<input type="checkbox"/>	<input type="checkbox"/>	<input type="checkbox"/>	<input type="checkbox"/>	<input type="checkbox"/>	<input type="checkbox"/>		
					<input type="checkbox"/>	<input type="checkbox"/>	<input type="checkbox"/>	<input type="checkbox"/>	<input type="checkbox"/>	<input type="checkbox"/>	<input type="checkbox"/>	<input type="checkbox"/>		
					<input type="checkbox"/>	<input type="checkbox"/>	<input type="checkbox"/>	<input type="checkbox"/>	<input type="checkbox"/>	<input type="checkbox"/>	<input type="checkbox"/>	<input type="checkbox"/>		
					<input type="checkbox"/>	<input type="checkbox"/>	<input type="checkbox"/>	<input type="checkbox"/>	<input type="checkbox"/>	<input type="checkbox"/>	<input type="checkbox"/>	<input type="checkbox"/>		
					<input type="checkbox"/>	<input type="checkbox"/>	<input type="checkbox"/>	<input type="checkbox"/>	<input type="checkbox"/>	<input type="checkbox"/>	<input type="checkbox"/>	<input type="checkbox"/>		
					<input type="checkbox"/>	<input type="checkbox"/>	<input type="checkbox"/>	<input type="checkbox"/>	<input type="checkbox"/>	<input type="checkbox"/>	<input type="checkbox"/>	<input type="checkbox"/>		
					<input type="checkbox"/>	<input type="checkbox"/>	<input type="checkbox"/>	<input type="checkbox"/>	<input type="checkbox"/>	<input type="checkbox"/>	<input type="checkbox"/>	<input type="checkbox"/>		
					<input type="checkbox"/>	<input type="checkbox"/>	<input type="checkbox"/>	<input type="checkbox"/>	<input type="checkbox"/>	<input type="checkbox"/>	<input type="checkbox"/>	<input type="checkbox"/>		
					<input type="checkbox"/>	<input type="checkbox"/>	<input type="checkbox"/>	<input type="checkbox"/>	<input type="checkbox"/>	<input type="checkbox"/>	<input type="checkbox"/>	<input type="checkbox"/>		
					<input type="checkbox"/>	<input type="checkbox"/>	<input type="checkbox"/>	<input type="checkbox"/>	<input type="checkbox"/>	<input type="checkbox"/>	<input type="checkbox"/>	<input type="checkbox"/>		
					<input type="checkbox"/>	<input type="checkbox"/>	<input type="checkbox"/>	<input type="checkbox"/>	<input type="checkbox"/>	<input type="checkbox"/>	<input type="checkbox"/>	<input type="checkbox"/>		
					<input type="checkbox"/>	<input type="checkbox"/>	<input type="checkbox"/>	<input type="checkbox"/>	<input type="checkbox"/>	<input type="checkbox"/>	<input type="checkbox"/>	<input type="checkbox"/>		
					<input type="checkbox"/>	<input type="checkbox"/>	<input type="checkbox"/>	<input type="checkbox"/>	<input type="checkbox"/>	<input type="checkbox"/>	<input type="checkbox"/>	<input type="checkbox"/>		
					<input type="checkbox"/>	<input type="checkbox"/>	<input type="checkbox"/>	<input type="checkbox"/>	<input type="checkbox"/>	<input type="checkbox"/>	<input type="checkbox"/>	<input type="checkbox"/>		
					<input type="checkbox"/>	<input type="checkbox"/>	<input type="checkbox"/>	<input type="checkbox"/>	<input type="checkbox"/>	<input type="checkbox"/>	<input type="checkbox"/>	<input type="checkbox"/>		
					<input type="checkbox"/>	<input type="checkbox"/>	<input type="checkbox"/>	<input type="checkbox"/>	<input type="checkbox"/>	<input type="checkbox"/>	<input type="checkbox"/>	<input type="checkbox"/>		
					<input type="checkbox"/>	<input type="checkbox"/>	<input type="checkbox"/>	<input type="checkbox"/>	<input type="checkbox"/>	<input type="checkbox"/>	<input type="checkbox"/>	<input type="checkbox"/>		
					<input type="checkbox"/>	<input type="checkbox"/>	<input type="checkbox"/>	<input type="checkbox"/>	<input type="checkbox"/>	<input type="checkbox"/>	<input type="checkbox"/>	<input type="checkbox"/>		
					<input type="checkbox"/>	<input type="checkbox"/>	<input type="checkbox"/>	<input type="checkbox"/>	<input type="checkbox"/>	<input type="checkbox"/>	<input type="checkbox"/>	<input type="checkbox"/>		
					<input type="checkbox"/>	<input type="checkbox"/>	<input type="checkbox"/>	<input type="checkbox"/>	<input type="checkbox"/>	<input type="checkbox"/>	<input type="checkbox"/>	<input type="checkbox"/>		
					<input type="checkbox"/>	<input type="checkbox"/>	<input type="checkbox"/>	<input type="checkbox"/>	<input type="checkbox"/>	<input type="checkbox"/>	<input type="checkbox"/>	<input type="checkbox"/>		
					<input type="checkbox"/>	<input type="checkbox"/>	<input type="checkbox"/>	<input type="checkbox"/>	<input type="checkbox"/>	<input type="checkbox"/>	<input type="checkbox"/>	<input type="checkbox"/>		
					<input type="checkbox"/>	<input type="checkbox"/>	<input type="checkbox"/>	<input type="checkbox"/>	<input type="checkbox"/>	<input type="checkbox"/>	<input type="checkbox"/>	<input type="checkbox"/>		
					<input type="checkbox"/>	<input type="checkbox"/>	<input type="checkbox"/>	<input type="checkbox"/>	<input type="checkbox"/>	<input type="checkbox"/>	<input type="checkbox"/>	<input type="checkbox"/>		
					<input type="checkbox"/>	<input type="checkbox"/>	<input type="checkbox"/>	<input type="checkbox"/>	<input type="checkbox"/>	<input type="checkbox"/>	<input type="checkbox"/>	<input type="checkbox"/>		
					<input type="checkbox"/>	<input type="checkbox"/>	<input type="checkbox"/>	<input type="checkbox"/>	<input type="checkbox"/>	<input type="checkbox"/>	<input type="checkbox"/>	<input type="checkbox"/>		
					<input type="checkbox"/>	<input type="checkbox"/>	<input type="checkbox"/>	<input type="checkbox"/>	<input type="checkbox"/>	<input type="checkbox"/>	<input type="checkbox"/>	<input type="checkbox"/>		
					<input type="checkbox"/>	<input type="checkbox"/>	<input type="checkbox"/>	<input type="checkbox"/>	<input type="checkbox"/>	<input type="checkbox"/>	<input type="checkbox"/>	<input type="checkbox"/>		
					<input type="checkbox"/>	<input type="checkbox"/>	<input type="checkbox"/>	<input type="checkbox"/>	<input type="checkbox"/>	<input type="checkbox"/>	<input type="checkbox"/>	<input type="checkbox"/>		
					<input type="checkbox"/>	<input type="checkbox"/>	<input type="checkbox"/>	<input type="checkbox"/>	<input type="checkbox"/>	<input type="checkbox"/>	<input type="checkbox"/>	<input type="checkbox"/>		
					<input type="checkbox"/>	<input type="checkbox"/>	<input type="checkbox"/>	<input type="checkbox"/>	<input type="checkbox"/>	<input type="checkbox"/>	<input type="checkbox"/>	<input type="checkbox"/>		
					<input type="checkbox"/>	<input type="checkbox"/>	<input type="checkbox"/>	<input type="checkbox"/>	<input type="checkbox"/>	<input type="checkbox"/>	<input type="checkbox"/>	<input type="checkbox"/>		
					<input type="checkbox"/>	<input type="checkbox"/>	<input type="checkbox"/>	<input type="checkbox"/>	<input type="checkbox"/>	<input type="checkbox"/>	<input type="checkbox"/>	<input type="checkbox"/>		
					<input type="checkbox"/>	<input type="checkbox"/>	<input type="checkbox"/>	<input type="checkbox"/>	<input type="checkbox"/>	<input type="checkbox"/>	<input type="checkbox"/>	<input type="checkbox"/>		
					<input type="checkbox"/>	<input type="checkbox"/>	<input type="checkbox"/>	<input type="checkbox"/>	<input type="checkbox"/>	<input type="checkbox"/>	<input type="checkbox"/>	<input type="checkbox"/>		
					<input type="checkbox"/>	<input type="checkbox"/>	<input type="checkbox"/>	<input type="checkbox"/>	<input type="checkbox"/>	<input type="checkbox"/>	<input type="checkbox"/>	<input type="checkbox"/>		
					<input type="checkbox"/>	<input type="checkbox"/>	<input type="checkbox"/>	<input type="checkbox"/>	<input type="checkbox"/>	<input type="checkbox"/>	<input type="checkbox"/>	<input type="checkbox"/>		
					<input type="checkbox"/>	<input type="checkbox"/>	<input type="checkbox"/>	<input type="checkbox"/>	<input type="checkbox"/>	<input type="checkbox"/>	<input type="checkbox"/>	<input type="checkbox"/>		
					<input type="checkbox"/>	<input type="checkbox"/>	<input type="checkbox"/>	<input type="checkbox"/>	<input type="checkbox"/>	<input type="checkbox"/>	<input type="checkbox"/>	<input type="checkbox"/>		
					<input type="checkbox"/>	<input type="checkbox"/>	<input type="checkbox"/>	<input type="checkbox"/>	<input type="checkbox"/>	<input type="checkbox"/>	<input type="checkbox"/>	<input type="checkbox"/>		
					<input type="checkbox"/>	<input type="checkbox"/>	<input type="checkbox"/>	<input type="checkbox"/>	<input type="checkbox"/>	<input type="checkbox"/>	<input type="checkbox"/>	<input type="checkbox"/>		
					<input type="checkbox"/>	<input type="checkbox"/>	<input type="checkbox"/>	<input type="checkbox"/>	<input type="checkbox"/>	<input type="checkbox"/>	<input type="checkbox"/>	<input type="checkbox"/>		
					<input type="checkbox"/>	<input type="checkbox"/>	<input type="checkbox"/>	<input type="checkbox"/>	<input type="checkbox"/>	<input type="checkbox"/>	<input type="checkbox"/>	<input type="checkbox"/>		
					<input type="checkbox"/>	<input type="checkbox"/>	<input type="checkbox"/>	<input type="checkbox"/>	<input type="checkbox"/>	<input type="checkbox"/>	<input type="checkbox"/>	<input type="checkbox"/>		
					<input type="checkbox"/>	<input type="checkbox"/>	<input type="checkbox"/>	<input type="checkbox"/>	<input type="checkbox"/>	<input type="checkbox"/>	<input type="checkbox"/>	<input type="checkbox"/>		
					<input type="checkbox"/>	<input type="checkbox"/>	<input type="checkbox"/>	<input type="checkbox"/>	<input type="checkbox"/>	<input type="checkbox"/>	<input type="checkbox"/>	<input type="checkbox"/>		
					<input type="checkbox"/>	<input type="checkbox"/>	<input type="checkbox"/>	<input type="checkbox"/>	<input type="checkbox"/>	<input type="checkbox"/>	<input type="checkbox"/>	<input type="checkbox"/>		
					<input type="checkbox"/>	<input type="checkbox"/>	<input type="checkbox"/>	<input type="checkbox"/>	<input type="checkbox"/>	<input type="checkbox"/>	<input type="checkbox"/>	<input type="checkbox"/>		
					<input type="checkbox"/>	<input type="checkbox"/>	<input type="checkbox"/>	<input type="checkbox"/>	<input type="checkbox"/>	<input type="checkbox"/>	<input type="checkbox"/>	<input type="checkbox"/>		
					<input type="checkbox"/>	<input type="checkbox"/>	<input type="checkbox"/>	<input type="checkbox"/>	<input type="checkbox"/>	<input type="checkbox"/>	<input type="checkbox"/>	<input type="checkbox"/>		
					<input type="checkbox"/>	<input type="checkbox"/>	<input type="checkbox"/>	<input type="checkbox"/>	<input type="checkbox"/>	<input type="checkbox"/>	<input type="checkbox"/>	<input type="checkbox"/>		
					<input type="checkbox"/>	<input type="checkbox"/>	<input type="checkbox"/>	<input type="checkbox"/>	<input type="checkbox"/>	<input type="checkbox"/>	<input type="checkbox"/>	<input type="checkbox"/>		
					<input type="checkbox"/>	<input type="checkbox"/>	<input type="checkbox"/>	<input type="checkbox"/>	<input type="checkbox"/>	<input type="checkbox"/>	<input type="checkbox"/>	<input type="checkbox"/>		
					<input type="checkbox"/>	<input type="checkbox"/>	<input type="checkbox"/>	<input type="checkbox"/>	<input type="checkbox"/>	<input type="checkbox"/>	<input type="checkbox"/>	<input type="checkbox"/>		
					<input type="checkbox"/>	<input type="checkbox"/>	<input type="checkbox"/>	<input type="checkbox"/>	<input type="checkbox"/>	<input type="checkbox"/>	<input type="checkbox"/>	<input type="checkbox"/>		
					<input type="checkbox"/>	<input type="checkbox"/>	<input type="checkbox"/>	<input type="checkbox"/>	<input type="checkbox"/>	<input type="checkbox"/>	<input type="checkbox"/>	<input type="checkbox"/>		
					<input type="checkbox"/>	<input type="checkbox"/>	<input type="checkbox"/>	<input type="checkbox"/>	<input type="checkbox"/>	<input type="checkbox"/>	<input type="checkbox"/>	<input type="checkbox"/>		
					<input type="checkbox"/>	<input type="checkbox"/>	<input type="checkbox"/>	<input type="checkbox"/>	<input type="checkbox"/>	<input type="checkbox"/>	<input type="checkbox"/>	<input type="checkbox"/>		
					<input type="checkbox"/>	<input type="checkbox"/>	<input type="checkbox"/>	<input type="checkbox"/>	<input type="checkbox"/>	<input type="checkbox"/>	<input type="checkbox"/>	<input type="checkbox"/>		
					<input type="checkbox"/>	<input type="checkbox"/>	<input type="checkbox"/>	<input type="checkbox"/>	<input type="checkbox"/>	<input type="checkbox"/>	<input type="checkbox"/>	<input type="checkbox"/>		
					<input type="checkbox"/>	<input type="checkbox"/>	<input type="checkbox"/>	<input type="checkbox"/>	<input type="checkbox"/>	<input type="checkbox"/>	<input type="checkbox"/>	<input type="checkbox"/>		
					<input type="checkbox"/>	<input type="checkbox"/>	<input type="checkbox"/>	<input type="checkbox"/>	<input type="checkbox"/>	<input type="checkbox"/>	<input type="checkbox"/>	<input type="checkbox"/>		
					<input type="checkbox"/>	<input type="checkbox"/>	<input type="checkbox"/>	<input type="checkbox"/>	<input type="checkbox"/>	<input type="checkbox"/>	<input type="checkbox"/>	<input type="checkbox"/>		
					<input type="checkbox"/>	<input type="checkbox"/>	<input type="checkbox"/>	<input type="checkbox"/>	<input type="checkbox"/>	<input type="checkbox"/>	<input type="checkbox"/>	<input type="checkbox"/>		
					<input type="checkbox"/>	<input type="checkbox"/>	<input type="checkbox"/>	<input type="checkbox"/>	<input type="checkbox"/>	<input type="checkbox"/>	<input type="checkbox"/>	<input type="checkbox"/>		
					<input type="checkbox"/>	<input type="checkbox"/>	<input type="checkbox"/>	<input type="checkbox"/>	<input type="checkbox"/>	<input type="checkbox"/>	<input type="checkbox"/>	<input type="checkbox"/>		
					<input type="checkbox"/>	<input type="checkbox"/>	<input type="checkbox"/>	<input type="checkbox"/>	<input type="checkbox"/>	<input type="checkbox"/>	<input type="checkbox"/>	<input type="checkbox"/>		
					<input type="checkbox"/>	<input type="checkbox"/>	<input type="checkbox"/>	<input type="checkbox"/>	<input type="checkbox"/>	<input type="checkbox"/>	<input type="checkbox"/>	<input type="checkbox"/>		
					<input type="checkbox"/>	<input type="checkbox"/>	<input type="checkbox"/>	<input type="checkbox"/>	<input type="checkbox"/>	<input type="checkbox"/>	<input type="checkbox"/>	<input type="checkbox"/>		
					<input type="checkbox"/>	<input type="checkbox"/>	<input type="checkbox"/>	<input type="checkbox"/>	<input type="checkbox"/>	<input type="checkbox"/>	<input type="checkbox"/>	<input type="checkbox"/>		
					<input type="checkbox"/>	<input type="checkbox"/>	<input type="checkbox"/>	<input type="checkbox"/>	<input type="checkbox"/>	<input type="checkbox"/>	<input type="checkbox"/>	<input type="checkbox"/>		
					<input type="checkbox"/>	<input type="checkbox"/>	<input type="checkbox"/>	<input type="checkbox"/>	<input type="checkbox"/>	<input type="checkbox"/>	<input type="checkbox"/>	<input type="checkbox"/>		
					<input type="checkbox"/>	<input type="checkbox"/>	<input type="checkbox"/>	<input type="checkbox"/>	<input type="checkbox"/>	<input type="checkbox"/>	<input type="checkbox"/>	<input type="checkbox"/>		
					<input type="checkbox"/>	<input type="checkbox"/>	<input type="checkbox"/>	<input type="checkbox"/>	<input type="checkbox"/>	<input type="checkbox"/>	<input type="checkbox"/>	<input type="checkbox"/>		
					<input type="checkbox"/>	<input type="checkbox"/>	<input type="checkbox"/>	<input type="checkbox"/>	<input type="checkbox"/>	<input type="checkbox"/>	<input type="checkbox"/>	<input type="checkbox"/>		
					<input type="checkbox"/>	<input type="checkbox"/>	<input type="checkbox"/>	<input type="checkbox"/>	<input type="checkbox"/>	<input type="checkbox"/>	<input type="checkbox"/>	<input type="checkbox"/>		
					<input type="checkbox"/>	<input type="checkbox"/>	<input type="checkbox"/>	<input type="checkbox"/>	<input type="checkbox"/>	<input type="checkbox"/>	<input type="checkbox"/>	<input type="checkbox"/>		
					<input type="checkbox"/>	<input type="checkbox"/>	<input type="checkbox"/>	<input type="checkbox"/>	<input type="checkbox"/>	<input type="checkbox"/>	<input type="checkbox"/>	<input type="checkbox"/>		
					<input type="checkbox"/>	<input type="checkbox"/>	<input type="checkbox"/>	<input type="checkbox"/>	<input type="checkbox"/>	<input type="checkbox"/>	<input type="checkbox"/>	<input type="checkbox"/>		
					<input type="checkbox"/>	<input type="checkbox"/>	<input type="checkbox"/>	<input type="checkbox"/>	<input type="checkbox"/>	<input type="checkbox"/>	<input type="checkbox"/>	<input type="checkbox"/>		
					<input type="checkbox"/>	<input type="checkbox"/>	<input type="checkbox"/>	<input type="checkbox"/>	<input type="checkbox"/>	<input type="checkbox"/>	<input type="checkbox"/>	<input type="checkbox"/>		
					<input type="checkbox"/>	<input type="checkbox"/>	<input type="checkbox"/>	<input type="checkbox"/>	<input type="checkbox"/>	<input type="checkbox"/>	<input type="checkbox"/>	<input type="checkbox"/>		
					<input type="checkbox"/>	<input type="checkbox"/>	<input type="checkbox"/>	<input type="checkbox"/>	<input type="checkbox"/>	<input type="checkbox"/>	<input type="checkbox"/>	<input type="checkbox"/>		
					<input type="checkbox"/>	<input type="checkbox"/>	<input type="checkbox"/>	<input type="checkbox"/>	<input type="checkbox"/>	<input type="checkbox"/>	<input type="checkbox"/>	<input type="checkbox"/>		
					<input type="checkbox"/>	<input type="checkbox"/>	<input type="checkbox"/>	<input type="checkbox"/>	<input type="checkbox"/>	<input type="checkbox"/>	<input type="checkbox"/>	<input type="checkbox"/>		
					<input type="checkbox"/>	<input type="checkbox"/>	<input type="checkbox"/>	<input type="checkbox"/>	<input type="checkbox"/>	<input type="checkbox"/>	<input type="checkbox"/>	<input type="checkbox"/>		
					<input type="checkbox"/>	<input type="checkbox"/>	<input type="checkbox"/>	<input type="checkbox"/>	<input type="checkbox"/>	<input type="checkbox"/>	<input type="checkbox"/>	<input type="checkbox"/>		
					<input type="checkbox"/>	<input type="checkbox"/>	<input type="checkbox"/>	<input type="checkbox"/>	<input type="checkbox"/>	<input type="checkbox"/>	<input type="checkbox"/>	<input type="checkbox"/>		
					<input type="checkbox"/>	<input type="checkbox"/>	<input type="checkbox"/>	<input type="checkbox"/>	<input type="checkbox"/>	<input type="checkbox"/>	<input type="checkbox"/>	<input type="checkbox"/>		
					<input type="checkbox"/>	<input type="checkbox"/>	<input type="checkbox"/>	<input type="checkbox"/>	<input type="checkbox"/>	<input type="checkbox"/>	<input type="checkbox"/>	<input type="checkbox"/>		
					<input type="checkbox"/>	<input type="checkbox"/>	<input type="checkbox"/>	<input type="checkbox"/>	<input type="checkbox"/>	<input type="checkbox"/>	<input type="checkbox"/>	<input type="checkbox"/>		
					<input type="checkbox"/>	<input type="checkbox"/>	<input type="checkbox"/>							

10. CLASSIFICATION OF DAMPERS FOR REPAIR

The authorized service personnel of the manufacturer or trained companies authorized by them are responsible for removing any detected damages during the periodic inspection. In case of malfunction or damage, the user is obliged to notify the manufacturer or an authorized service company.

After each activation of the damper as a result of a fire action at the facility, it is necessary to assess its technical condition, and consequently qualify it for repair or replacement with a new one. The assessment can only be carried out by the manufacturer's service personnel. Repair work or replacement of the damper after activation due to a fire action at the facility is not covered by the warranty.

11. WARRANTY CONDITIONS

The manufacturer provides a warranty for the delivered products, on the terms set forth in the Agreement or the General Warranty Conditions of Smay, Sp. z o.o. The warranty does not cover defects resulting from improper storage, transportation, installation, and commissioning, operation, periodic maintenance, service, especially mechanical damage and damage to anti-corrosive coatings.

The manufacturer is exempt from warranty obligations if the user introduces structural changes independently, installs the product by the purchaser contrary to the Installation Instructions and Technical Conditions of Sale (DTR), exceeds the declared durability of the damper, defects due to improper periodic maintenance, and when there is permanent removal of the product nameplate or lack of legibility and verification of the device type.

The General Warranty Conditions (OWG) and General Sales Conditions (OWS) documents are available on the website www.smay.pl



ATTENTION!

Installation and Commissioning Protocol - Fire Dampers:

- The protocol should be signed by a person holding a valid, personalized certificate or authorization issued by Smay Sp. z o.o., authorizing the installation of fire dampers.
- A copy of this document must be sent to the manufacturer electronically (www.smay.pl → **SERVICE AND WARRANTY** tab → **ADD COMMISSIONING PROTOCOL**).
- A copy of this document must be sent within 30 days from the date of commissioning (date specified in the Installation and Commissioning Protocol - Fire Dampers).

The template of the Installation and Commissioning Protocol - Fire Dampers is available in the Technical Documentation



ATTENTION!

Annual Inspection Protocol - Fire Dampers:

- The protocol should be signed by a person holding a valid, personalized certificate or authorization issued by Smay Sp. z o.o., authorizing inspections of fire dampers.
- In order to maintain the warranty, the employee conducting inspections of SMAY fire dampers is required, upon completion of such inspection, to submit the Annual Inspection Protocol to the manufacturer electronically (www.smay.pl → **SERVICE AND WARRANTY** tab → **ADD COMMISSIONING PROTOCOL**)

The template of the Annual Inspection Protocol - Fire Dampers is located at the end of the Technical Documentation.



ATTENTION!

The templates of forms attached to this Technical Documentation (related to installation, commissioning, inspections) are the intellectual property of Smay sp. z o.o. Copying, duplicating, and using them for purposes other than those specified in this Technical and Operating Documentation is prohibited. To maintain the warranty, it is required to fill them out and deliver them to SMAY sp. z o.o. within 30 days from the date of installation/commissioning and inspection (other forms will not be accepted).