

# STR

## VENTILATION GRILLES WITH MOVABLE VANES FOR ROUND DUCTS



### Characteristics:

A rectangular air supply or exhaust ventilation grille made of steel, with movable vanes, installed in round ducts.

### Intended use

The STR ventilation grilles are designed for use in low- and medium-pressure ventilation systems, in round ventilation ducts. A wide range of grille design options makes it possible to direct the supply air flow in an optimal way or to use the grilles as exhaust elements.

### Design

The grille is made of painted steel. The whole product is painted in RAL9010 white as standard. Other RAL colours are available upon request. A stainless steel version can be delivered upon request. In the painted version, the vanes have limited movement due to the paint layer.

### STR grille versions

#### STRW



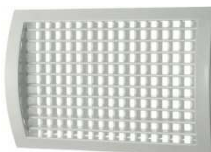
a single row of movable, horizontal vanes

#### STRS



a single row of movable, vertical vanes

#### STRWS



two rows of movable vanes, the external row is horizontal

#### STRSW



two rows of movable vanes, the external row is vertical

### Dimensions

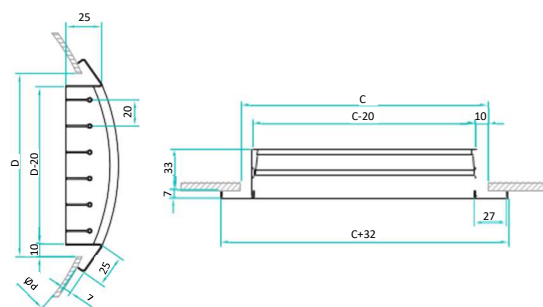


Figure 1. STRW grille dimensions

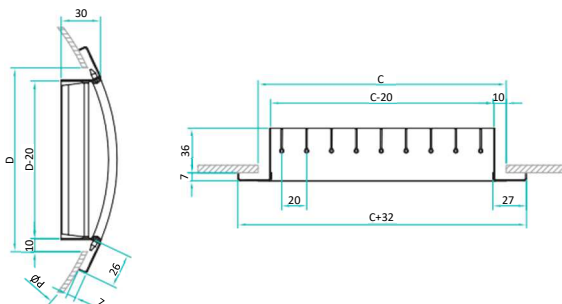


Figure 2. STRS grille dimensions

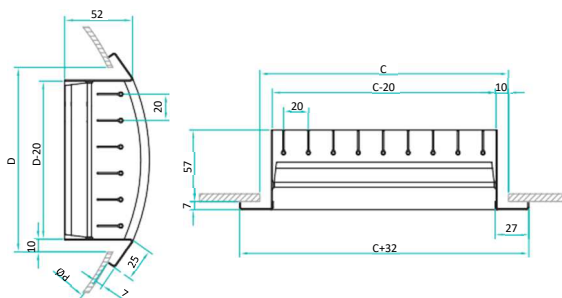


Figure 3. STRWS grille dimensions

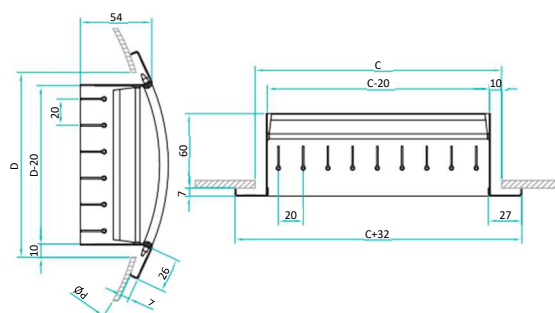


Figure 4. STRSW grille dimensions

### Net surface area

Approximate net surface area of the STR grilles:

$$A = 82\% \times [(C-20) \times (D-20)]$$



The technical data of the grilles, including pressure loss, noise level and stream ranges, is available at smay.eu, in the document titled "Flow Characteristics for Grilles and Diffusers"

Standard dimensions of the STR grilles:

- width **C = 75–1225 mm**
- height **D = 75–625 mm**

Table 1. Maximum grille height depending on the ventilation duct diameter

Ventilation duct diameter ød [mm]	Maximum grille height Dmax [mm]
160	75
200	125
250	125
315	225
400	225
500	325
630	325
800	425

## STR – Ventilation grilles for round ducts

When ordering, please provide information according to the following pattern:

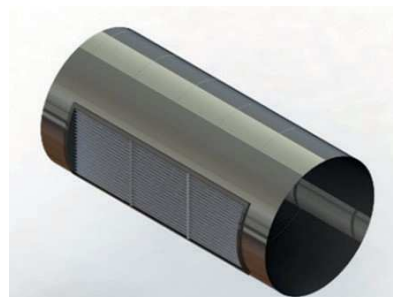
<TYPE> – <C>×<D> – <S> – P<RAL> / <ADD>

Where:

<b>TYPE</b>	STRW, STRWS, STRS or STRSW
<b>C</b>	mounting hole width in mm
<b>D</b>	mounting hole height in mm
<b>S</b>	ventilation duct diameter in mm
<b>P</b>	finish*
	<b>SL</b> – painted steel
	<b>SN</b> – stainless steel, quality 1.4301 (304 according to AISI, 0H18N9 according to PN)
<b>RAL</b>	colour as per RAL*
<b>ADD</b>	specify additional accessories here, as below**

### Installation

The grilles can be installed in ventilation ducts with screws, through holes in the grille frame.



### Accessories:

<b>GA</b>	backward damper made of aluminium
<b>GP</b>	backward damper made of galvanised steel
<b>GSN</b>	concurrent damper made of stainless steel
<b>GC</b>	reclining damper made of galvanised steel
<b>GCN</b>	reclining damper made of stainless steel
<b>GM</b>	arched damper made of galvanised steel and aluminium
<b>GT</b>	slot damper made of galvanised steel
<b>GTN</b>	slot damper made of stainless steel
<b>L01</b>	screen deflector with a clearance equal to 40%, made of galvanised steel
<b>L02</b>	screen deflector with a clearance equal to 58%, made of galvanised steel

\* optional values – if not specified, default values will be used  
\*\* for more information about accessories, see the accessories sheet for grilles and diffusers.

Order example: **STRW-525×225-315-SL9010/GS**



Blocks for REVIT software, a selection programme and certificates are available at [www.smay.pl](http://www.smay.pl).