

WPDB/CPDB

B-TYPE RECTANGULAR ROOF AIR-INTAKE/EXHAUST VENTILATOR



Description:

WPDB B-type rectangular roof air-exhaust ventilator with fixed louvres.

CPDB B-type rectangular roof air-intake ventilator with fixed louvres and a bird guard netting.

Intended use

WPDB roof exhaust and CPDB roof air-intake ventilators are used on duct ends in ventilation installation ducts.

Design

WPDB exhaust and CPDB intake ventilators are fitted with 30 mm wide flange connections throughout the range. In the case of CPDB air-intake ventilators, the air outlets are secured with fixed louvres and additional steel wire bird guard netting. The exhaust and intake ventilators are normally made of galvanised steel. Other RAL colour-painted versions and a stainless steel version are available upon special request.

The constructional elements of the exhaust and air-intake ventilators are joined by means of clinching (or press joining) and riveting (no thermal impact on the materials being joined and their coatings). The constriction at the base $(A-50) \times (B-50)$ acts as drainage for water that passes through the louver barrier under the influence of strong wind.

Standard dimensions of the WPDB exhaust and CPDB intake ventilators are presented in Table 1. Dimensions in the 160x160 - 2500x1250 mm (2250x1000 if P = SN) range are available upon request. The base height is manufactured as $H_c = 300$ mm standard. The H_L height of the louver rows is calculated so that the effective area of the three louver walls was equal to the area of the $A \times B$ base (where $A \neq B$ are two smaller walls and one larger).

Table 1. WPDB and CPDB dimensions.

A x B [mm]	A ₁ [mm]	B ₁ [mm]	H [mm]	H _L [mm]	A _{ef} [m ²]	Weight [kg]	
						WPDB	CPDB
250 x 250	420	420	530	201	0.09	11.0	11.5
400 x 250	570	420	600	268	0.17	14.5	15.0
630 x 250	800	420	600	268	0.23	21.0	22.0
400 x 400	570	570	600	268	0.21	18.0	19.0
630 x 400	800	570	670	335	0.35	26.0	27.5
630 x 630	800	800	740	402	0.52	31.5	33.0
1000 x 630	1170	800	880	536	0.91	46.0	50.0
1600 x 630	1770	800	1030	670	1.56	75.0	81.5
1000 x 1000	1170	1170	950	603	1.27	66.0	71.0
1600 x 1000	1770	1170	1230	871	2.40	104.0	114.0

Dimensions

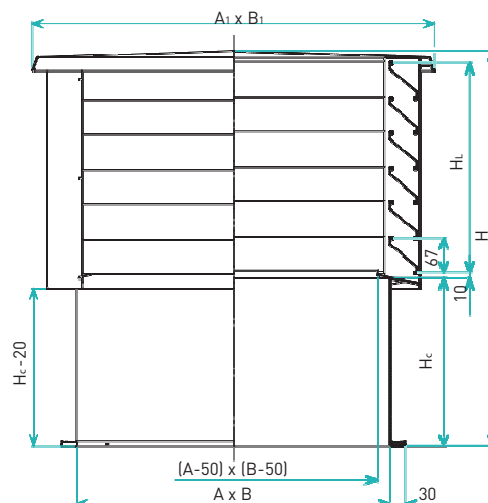


Figure 1. WPDB roof exhaust ventilator dimensions.

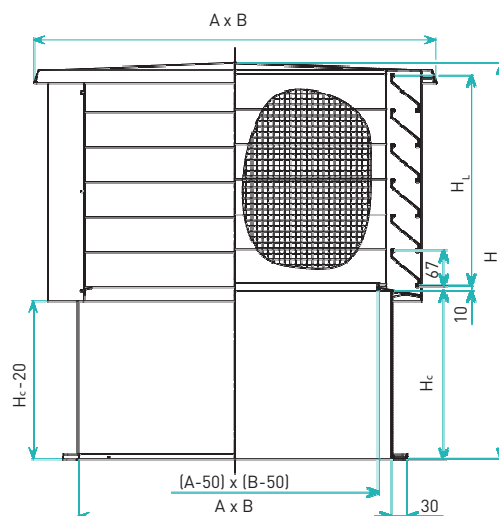


Figure 2. CPDB roof air-intake ventilator dimensions.

SL

SO

SN

RAL

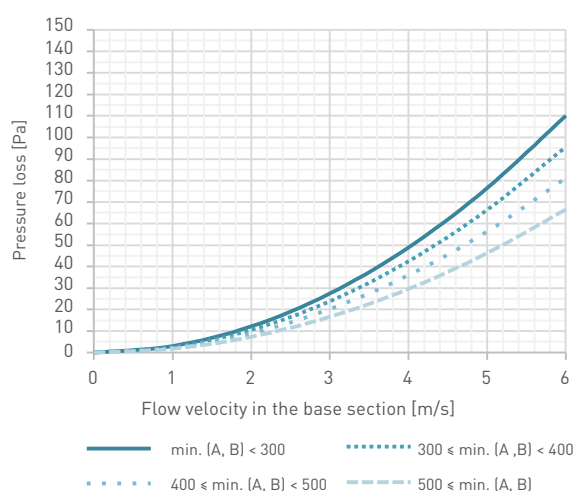
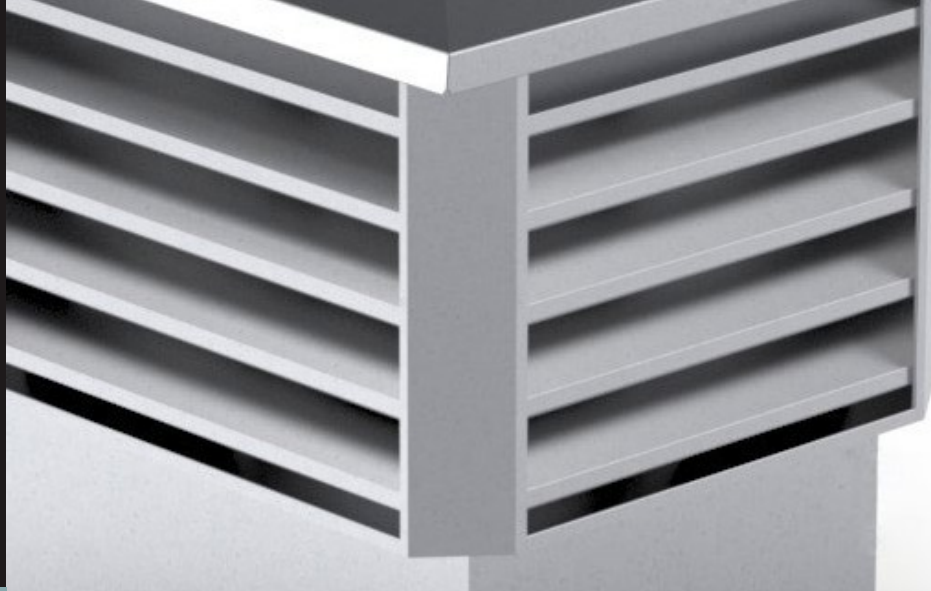


Diagram 1. Pressure loss for WPDB exhaust ventilators.

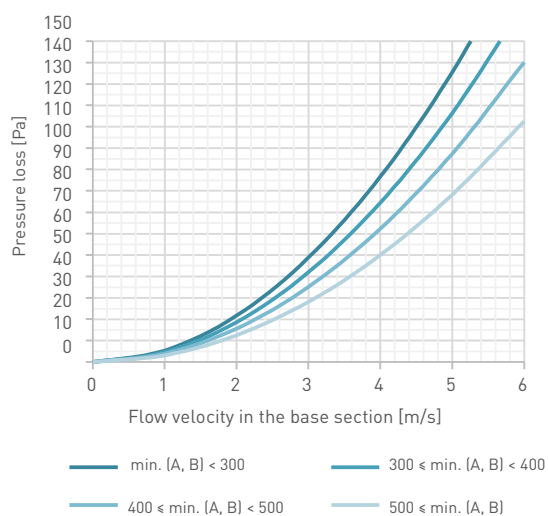


Diagram 2. Pressure loss for CPDB air-intake ventilators.

WPDB/CPDB – B-type rectangular roof air-intake/exhaust ventilator

When ordering, please provide information according to the following pattern:

For the standard version

WPDB/CPDB - <A>x - <H> - <P><RAL>

Where:

A	Exhaust or air-intake ventilator clear distance width [mm]
B	Exhaust or air-intake ventilator clear distance length [mm]
Hc	Base height 100–350 mm (300 mm standard)
P	Finish*
	SL – Painted steel
	SO – Galvanised steel
	SN – Stainless steel, grade 1.4301 (304 according to AISI, 0H18N9 according to PN)

RAL Colour as per RAL (for SL finish)

* Optional values, if they are not provided, the default values will be used.

Example of product marking: **WPDB-250x250-300-SO**

CPDB-250x250-300-SO