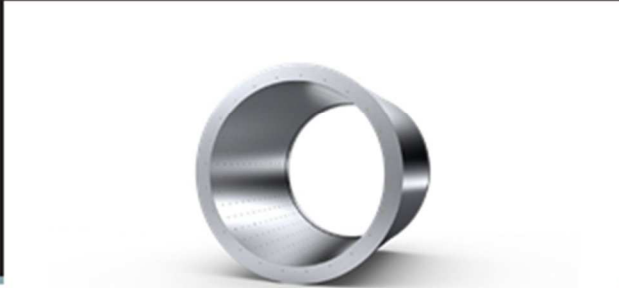


TL-C

TUBULAR SILENCER



Intended use:

The TL-C duct silencers for ventilation ducts are designed for attenuating noise transferred by ducts in ventilation systems (diameters ranging from Ø630 to Ø1,250) or in smoke extraction installations with the following fire-resistance rating: E₆₀₀120(h₀)S1500 single

Design

The TL-C duct silencers for ventilation ducts are available in diameters ranging from Ø355 to Ø1250. The maximum silencer length is 1450 mm.

The TL-C silencers have a body made of galvanised steel sheet. The body is finished with covers made of galvanised steel sheet that feature rivet nuts for flange connections. The silencer is filled with rock mineral wool that is protected with fibre glass and perforated galvanised sheet. The silencers can have a different rivet nut layout.

Application

The tightness of the standard TL-C silencer housing is classed as C according to EN 12237, which allows for using these silencers in ventilation systems with pressure ranging from -750 to 2000 Pa. The TL-CN silencer, when used in general ventilation systems, can be mounted in vertical or horizontal position.

Within the diameter range of 630 to 1250 the silencers have the following fire resistance rating: E₆₀₀120(h₀)S1500 single, which makes it possible to use them in single-zone smoke-exhaust ducts, mounted horizontally. The silencers can be mounted in a horizontal or vertical position when used with SEF(R) or SEF(V) fans.

Dimensions

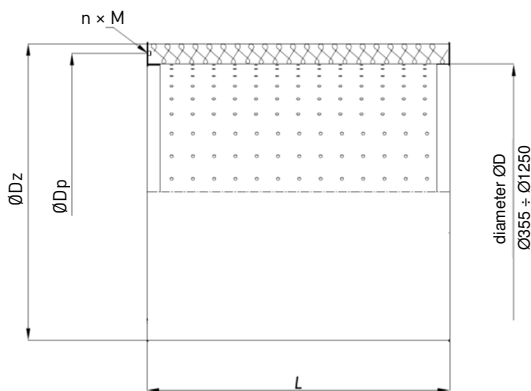


Figure 1. TL-C silencer dimensions.

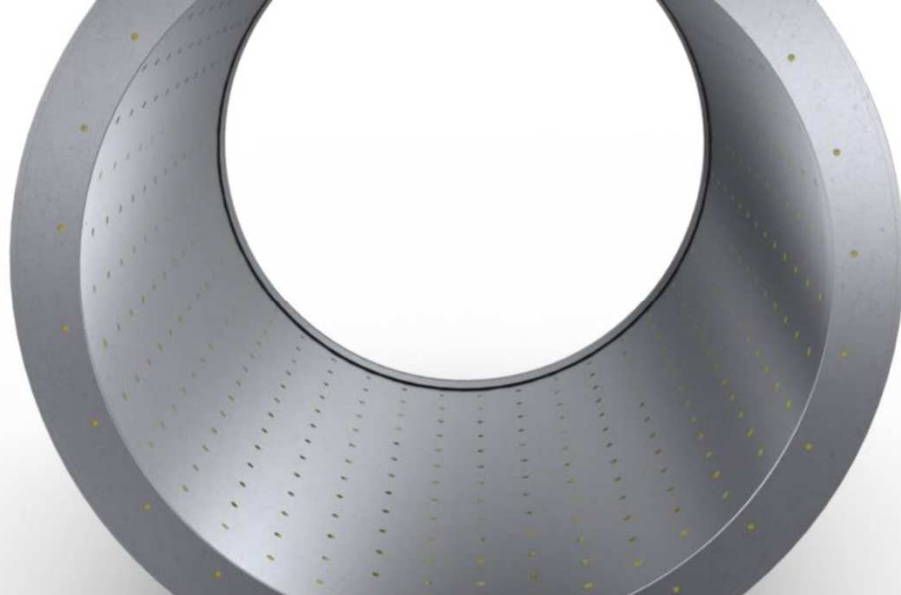
TL-C silencer selection

Table 1. Dimensions and empty weight

ØD [mm]	ØDz [mm]	TL-C-S (Eurovent 1/2)		TL-C-A TL-C-iSWAY		Weight approx. [kg]		
		ØDp [mm]	n × M	ØDp [mm]	n × M	L=500 [mm]	L=1000 [mm]	L=1450 [mm]
355	550	395	8× M8	-	-	16	28	39
400	600	450	8× M10	-	-	18	30	43
450	650	500	8× M10	-	-	19	33	47
500	700	560	12× M10	-	-	21	36	51
560	760	620	12× M10	610	12x M10	23	40	56
630	830	690	12× M10	690	12x M10	26	44	62
710	910	770	16× M10	-	-	28	48	68
800	1000	860	16× M10	850	12x M10	31	53	75
900	1100	970	16× M12	-	-	35	59	84
1000	1200	1070	16× M12	1050	12x M10	38	65	92
1120	1320	1190	16× M12	-	-	42	72	102
1250	1450	1320	20x M12	-	-	47	80	113

Table 2. Attenuation values in dB for individual frequency bands

Diameter	L	Frequency Bands [Hz]							
		63	125	250	500	1000	2000	4000	8000
355	500	2	3	6	12	16	9	5	4
	750	2	4	9	18	22	11	6	5
	1000	2	6	12	24	27	14	7	6
	1250	3	7	15	27	32	17	8	7
	1450	3	8	17	30	36	20	9	8
400	500	1	3	6	12	16	8	5	3
	750	2	4	9	18	21	10	6	4
	1000	2	5	11	23	25	12	6	5
	1250	2	6	14	26	30	15	7	6
	1450	3	7	16	30	34	18	7	7
450	500	1	2	5	12	16	8	4	3
	750	2	4	8	17	20	10	5	4
	1000	2	5	10	22	23	11	5	5
	1250	2	5	12	25	27	14	6	6
	1450	2	6	15	29	32	16	7	6



Diameter	L	Frequency Bands [Hz]							
		63	125	250	500	1000	2000	4000	8000
500	500	1	2	5	12	14	8	4	3
	750	1	3	8	17	18	9	5	3
	1000	2	4	10	21	22	10	5	4
	1250	2	5	12	25	26	13	6	5
	1450	2	6	14	29	30	15	7	6
560	500		2	5	12	14	8	3	3
	750	1	3	8	17	18	9	4	3
	1000	1	4	10	21	22	10	5	4
	1250	2	5	12	24	26	12	5	5
	1450	2	5	13	28	30	14	6	5
630	500		1	4	12	12	8	3	3
	750	1	3	7	16	17	9	4	4
	1000	1	4	9	20	21	9	5	4
	1250	2	5	10	24	26	11	6	5
	1450	2	5	11	28	30	12	6	5
710	500		1	4	10	9	6	3	3
	750		2	7	13	14	8	4	4
	1000	1	3	9	17	18	9	5	4
	1250	2	4	10	22	23	11	6	5
	1450	2	5	11	27	28	12	6	5
800	500		1	4	10	8	5	3	2
	750		2	6	12	11	6	4	3
	1000	1	3	8	14	15	8	5	4
	1250	2	3	9	20	21	9	5	4
	1450	2	4	11	26	27	10	6	5
900	500		1	3	10	7	4	3	2
	750		2	5	12	11	5	3	2
	1000	1	3	8	14	15	6	4	3
	1250	1	3	9	19	20	7	4	3
	1450	2	4	10	24	25	8	5	4
1000	500		1	3	8	6	3	2	2
	750		2	5	10	9	3	3	2
	1000	1	3	8	12	13	4	4	3
	1250	1	3	9	17	18	5	4	3
	1450	2	4	10	22	24	6	5	4

Diameter	L	Frequency Bands [Hz]							
		63	125	250	500	1000	2000	4000	8000
500	500		1	3	7	6	3	2	2
	750		1	5	9	9	3	3	2
	1000		2	7	12	13	4	4	3
	1250	1	2	9	16	17	5	4	3
	1450	1	3	10	20	22	6	5	4
1120	500		1	2	7	6	3	2	2
	750		1	4	9	9	3	3	2
	1000		2	7	11	12	4	4	3
	1250	1	2	8	14	16	4	4	3
	1450	1	3	10	18	20	5	5	4
1250	500		1	2	7	6	3	2	2
	750		1	4	9	9	3	3	2
	1000		2	7	11	12	4	4	3
	1250	1	2	8	14	16	4	4	3
	1450	1	3	10	18	20	5	5	4

Silencer pressure loss and internal noise are acceptably close to the characteristic values of simple circular ducts.

TL-C – Tubular Silencer

When ordering, please provide information according to the following pattern:

TL-C - <T> - <D> - <L>

Where:

T	Flange type*
	S - for SEF/SFL/SEF(R)/SEF(V) fan - Eurovent 1/2 standard
	A - for AFC/ARC/AJF fan
	iSWAY - for iSWAY-FC-B unit without housing
D	Silencer diameter
L	Silencer length

* optional values – if not specified, the default values will be used

Order example: **TL-C-S-355-1000**